

BEFORE BEGINNING INSTALLATION, READ ALL INSTRUCTIONS

INSTALLATION INSTRUCTIONS

- 1- REMOVE THE EXISTING SUN VISOR, BUT REMAIN THE EXISTING BOLTED BRACKETS ONTO THE CAB.
- 2- INSTALL THE SUPPLIED BRACKETS ONTO THE EXISTING BRACKETS ON THE CAB.
- 3- TEMPORARILY INSTALL THE SUN VISOR ONTO THE CAB.
- 4- USE RECOVERED HARDWARE FOR HOLES ON BOTH ENDS OF SUN VISOR.
- 5- MARK MISSING BRACKET HOLES ON CAB.

ATTENTION

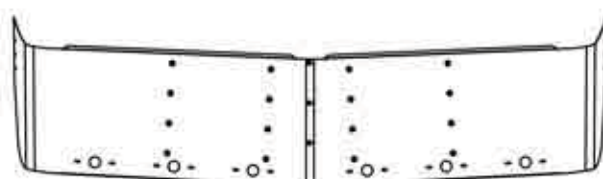
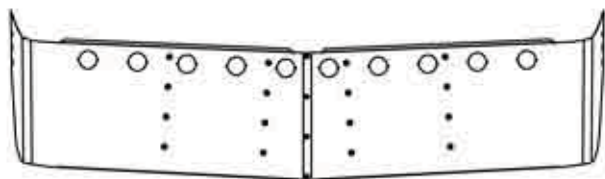
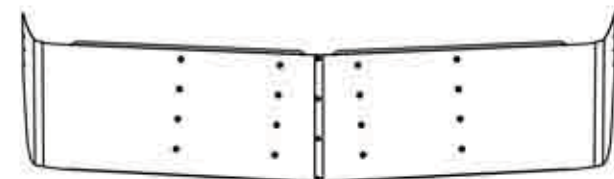
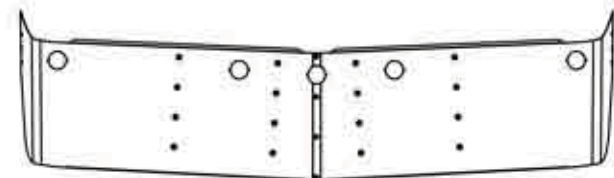
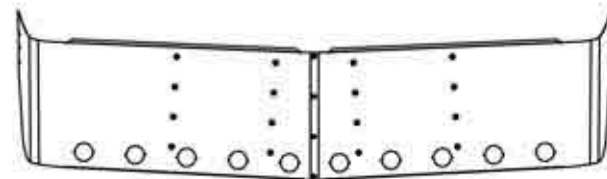
REMOVE SUN VISOR TO PREVENT DAMAGE

- 6- DRILL THE MARKED HOLES AT 1/2 " (.5") DIA.
- 7- INSERT THE WELLNUTS.
- 8- IF WITHOUT LIGHTS; SKIP TO STEP #13.
- 9- INSTALL THE LIGHTS ON SUN VISOR, CONNECT THE LIGHTS AND DIRECT WIRE TOWARDS CENTER.
- 10- INSTALL THE SUN VISOR ON THE CAB, AS ILLUSTRATED
- 11- INSTALL AND CONNECT THE CENTRAL LIGHT TO THE OTHERS.

CAUTION

IT IS THE RESPONSIBILITY OF THE INSTALLER TO PLAN AHEAD THE ADEQUATE ELECTRICAL CONNECTION ACCORDING TO THE STANDARDS OF THE TRUCK MANUFACTURER AND DOT REGISTRATION.

- 12- CONNECT LIGHTS HARNESS TO THE TRUCK.
- 13- REINSTALL THE SUN VISOR ON THE CAB, AS ILLUSTRATED.
- 14- TIGHTEN ALL BOLTS AND SCREWS FIRMLY.

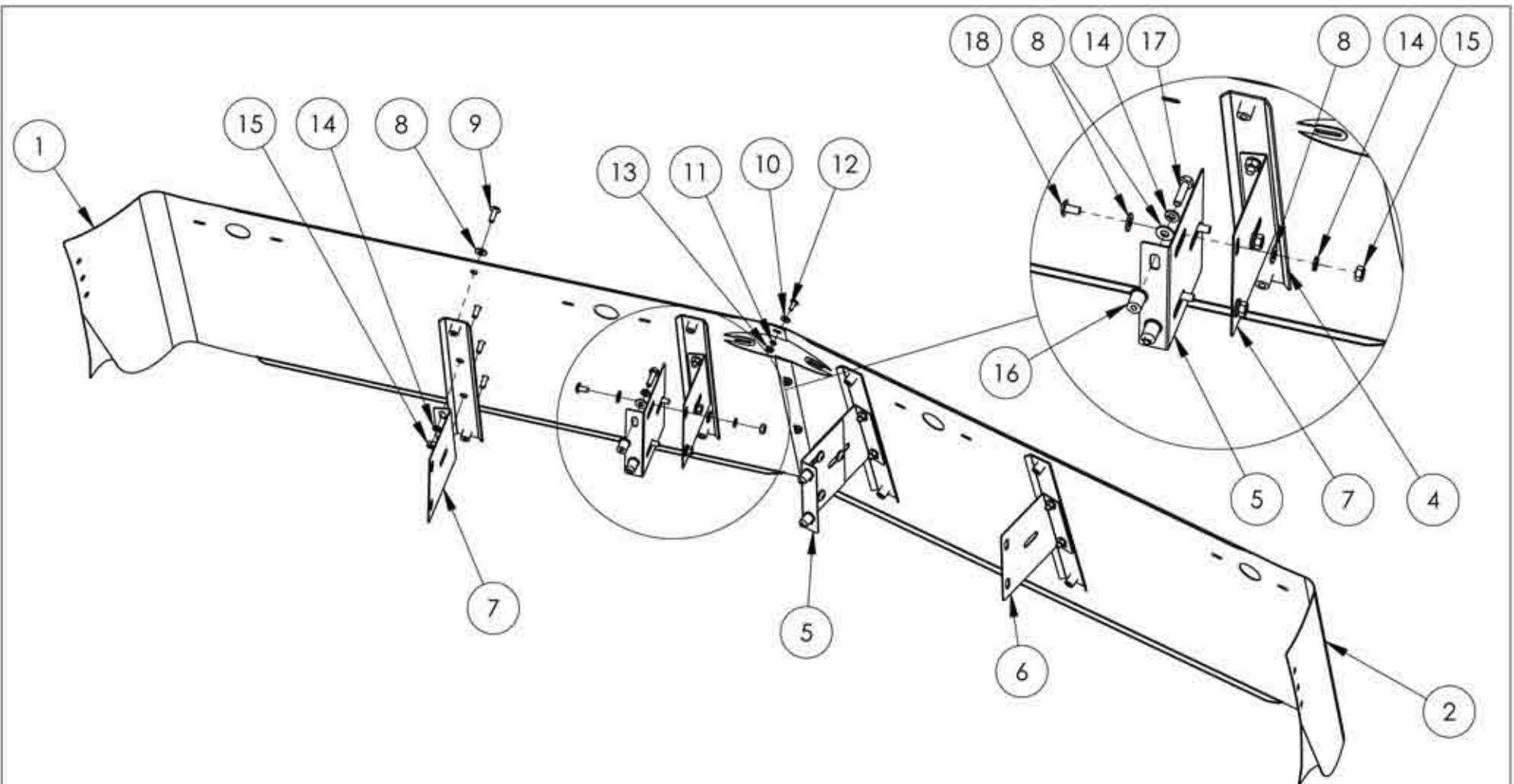


TRUX ACCESSORIES

TITLE:
SUN VISOR FRIEGHTLINER RAISE-ROOF
CLASSIC, CLASSIC XL, FLD 112 & 120 1991 & UP

SIZE DWG. NO.
A TSUN-F5, F6 & F7 & F8

NAME	DATE	REV	DATE
DRAWN BY	-	PH1	-
SCALE: 1:8	WEIGHT: LBS:	SHEET: 1 OF 1	



ITEM NO.	PART NO.	PART NO.	PART NO.	PART NO.	PART NO.	PART NO.	DESCRIPTION	QTY
1	M7331007SG	M7331008SG	M7331009SG	M7331013SG	M7331041SG	M7331042SG	SUN VISOR PANEL	1
2	M7331007SD	M7331008SD	M7331009SD	M7331013SD	M7331041SD	M7331042SD	SUN VISOR PANEL	1
3	K7331007BH	-	-	-	-	-	HARDWARE KIT INCLUDES:	1
4	-	-	-	-	-	-	PR9331007-U01	4
5	-	-	-	-	-	-	PR7331000-U01	2
6	-	-	-	-	-	-	PR7331001-D01	2
7	-	-	-	-	-	-	PR7131001-G01	2
8	-	-	-	-	-	-	FLAT WASHER 1/4"	32
9	-	-	-	-	-	-	TRUSS PHILIPS 1/4"-20NCX3/4"SS	16
10	-	-	-	-	-	-	FLAT WASHER ID# 10 X OD 1/2" SS	4
11	-	-	-	-	-	-	LOCK WASHER # 10 SS	4
12	-	-	-	-	-	-	TRUSS PHILIPS # 10-32NFX1/2" SS	4
13	-	-	-	-	-	-	NYLON LOCK NUT # 10-32NF SS	4
14	-	-	-	-	-	-	LOCK WASHER 1/4" SS	18
15	-	-	-	-	-	-	HEX NUT 1/4"-20NC	14
16	-	-	-	-	-	-	WELL NUT 1/4"-20NC	4
17	-	-	-	-	-	-	HEX. BOLT 1/4NC X 1	4
18	-	-	-	-	-	-	TRUSS PHILIPS 1/4"-20NCX1/2" S	6

TRUX ACCESSORIES

TITLE:
SUN VISOR FRIEGHTLINER RAISE-ROOF
CLASSIC, CLASSIC XL, FLD 112 & 120 1991 & UP

SIZE DWG. NO.
A TSUN-F5, F6 & F7 & F8

NAME	DATE	REV	DATE
DRAWN BY	-	PH1	-
SCALE: 1:8	WEIGHT: LBS.	SHEET: 1 OF 1	