

## BEFORE BEGINNING INSTALLATION, READ ALL INSTRUCTIONS

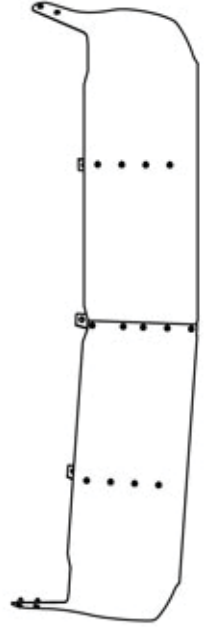
### INSTALLATION INSTRUCTIONS

- 1- INSTALL THE BRACKETS ONTO THE SUN VISOR.
- 2- TEMPORARILY INSTALL THE SUN VISOR ONTO THE CAB.
- 3- USING THE SUN VISOR, MARK OUT BRACKETS AND BOTH ENDS HOLES OF SUN VISOR.

### ATTENTION

#### REMOVE SUN VISOR TO PREVENT DAMAGE

- 4- DRILL THE PREVIOUSLY MARKED OUT HOLES AT 1/2 IN. DIA.
- 5- INSERT THE WELLNUTS.
- 6- REINSTALL THE SUN VISOR ONTO THE CAB AS ILLUSTRATED.
- 7- TIGHTEN ALL BOLTS AND SCREWS FIRMLY.



TITLE:

SUN VISOR FREIGHTLINER  
COLUMBIA DAY CAB 2001 & UP

SIZE DWG. NO.

**A** **TSUN-F24**

DRAWN BY

P.W.

DATE

27-03-2007

REV

PH2

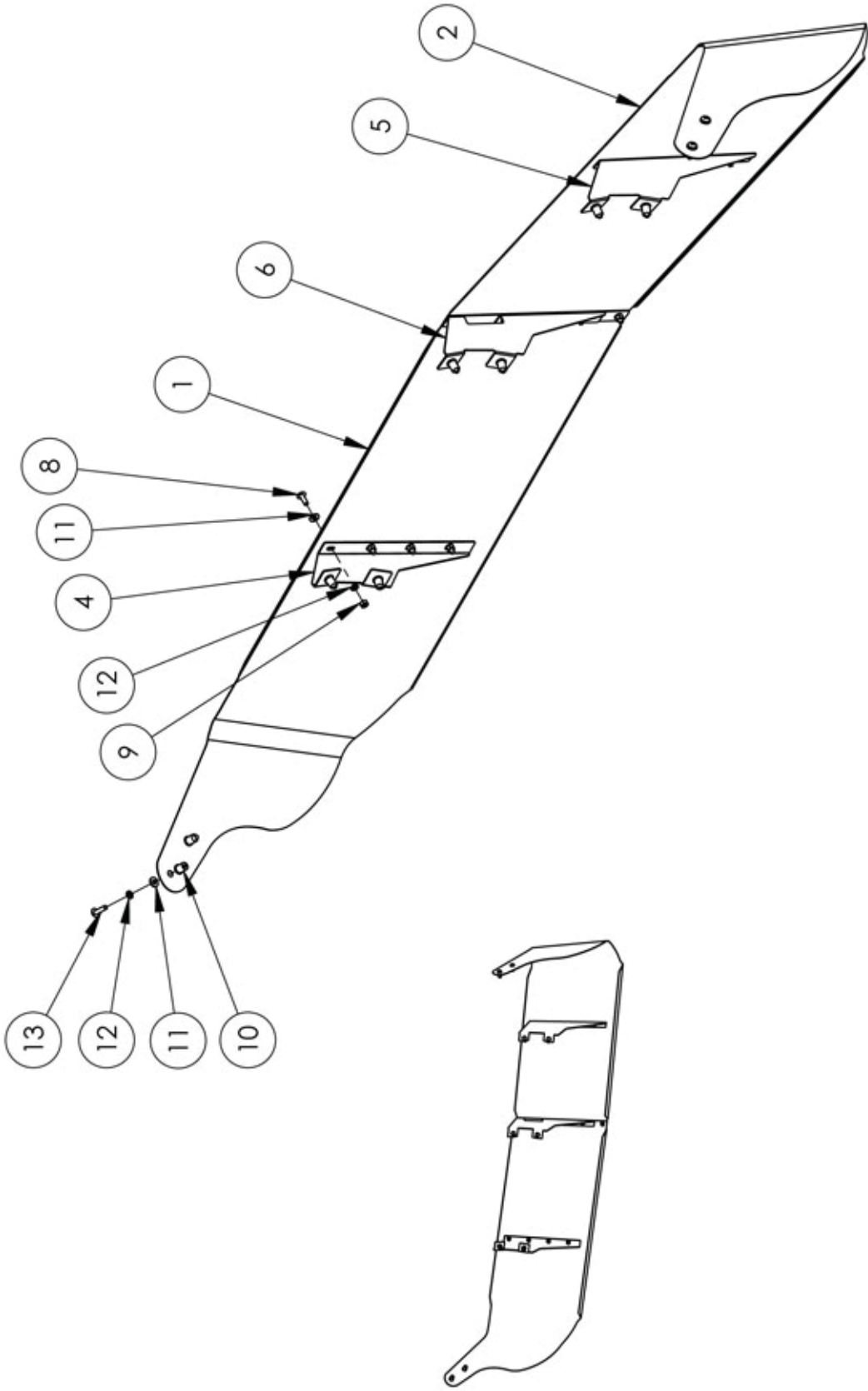
DATE

-

SCALE: 1:24

WEIGHT: LBS

SHEET: 1 OF 1



TITLE:  
 SUN VISOR FREIGHTLINER  
 COLUMBIA DAY CAB 2001 & UP

SIZE DWG. NO.  
**A** TSUN-F24

DRAWN BY	P.W.	DATE	REV	DATE
		27-03-2007	PH2	-
SCALE: 1:10	WEIGHT: LBS	SHEET: 1 OF 1		

ITEM NO.	PART NO.	MATERIEL	DESCRIPTION	QTY
1	M7331026SG	M7331029SG	SUN VISOR PANEL	1
2	M7331026SD	M7331029SD	SUN VISOR PANEL	1
3	K7331026BH	-	HARDWARE KIT INCLUDES:	
4	-	-	CL9331026-D00	1
5	-	-	CL9331026-G00	1
6	-	-	CL9331026-C00	1
7	-	-	HEX BOLT 1/4"NC X 1	6
8	-	-	TRUSS PHILIPS 1/4"-20NCX3/4"SS	13
9	-	-	HEX NUT 1/4-20NC	13
10	-	-	WELL NUT 1/4NC	10
11	-	-	FLAT WASHER 1/4"	23
12	-	-	LOCK WASHER 1/4" SS	23
13	-	-	TRUSS HEAD SCREW 1/4NC X 1	4