



(A LUPERNE Company)

1200 E. Birch St.

Brandon, SD 57005

## MACK PINNACLE AXLE FORWARD/BACK (2007-CURRENT)

### INSTALLATION INSTRUCTIONS

**READ THE INSTRUCTIONS COMPLETELY AND CHECK TO MAKE SURE THAT ALL OF THE REQUIRED PARTS ARE ON HAND BEFORE STARTING THE INSTALLATION.**

1. LOOSEN AND REMOVE THE TOW HOOKS FROM EACH SIDE OF THE FRAME RAIL BY REMOVING THE COTTER KEY AND 1" PIN.
2. USING THE 5/8" X 7/8" SHOULDER BOLTS (ITEM #8), .630 X 1.25 X .040 X .082 BELLEVILLE WASHERS (ITEM #15) AND 1/2"-13 NYLOCK NUTS (ITEM #13), ATTACH THE MOUNTING BRACKETS (ITEM #2 & #3) TO THE OUTSIDE OF THE GUARD USING THE BOTTOM HOLES. TIGHTEN TO 65 FOOT POUNDS.
3. USING THE 5/16"-18 X 1-1/4" BUTTON HEAD SCREWS (ITEM #10), 5/16" FLAT WASHER (ITEM #16) AND 5/16"-18 NYLOCK NUTS (ITEM #14), ATTACH THE RUBBER STOPS (ITEM #6) TO THE MOUNTING BRACKETS AS SHOWN IN *fig. 1*.
4. ASSEMBLE THE LATCHING HARDWARE – LATCH BUSHING (ITEM #5), BELLEVILLE WASHERS (ITEM #15), 1" OD X 5/8" ID X 1/16" NYLON WASHERS (ITEM #17), MOUNTING BRACKET LATCH (ITEM #4), 1/2"-13 X 3" HEX HEAD BOLT (ITEM #9), 7/16" WASHER (ITEM #12) AND 1/2"-13 HEX NYLOCK NUT (ITEM #13) TO THE MOUNTING BAR ON THE GRILLE GUARD. LEAVE LOOSE AT THIS TIME. (NOTE: APPLY A SMALL AMOUNT OF GREASE TO THE SLOT AREA OF THE MOUNTING BRACKET LATCH TO AID IN SLIDING.)
5. CLOSE THE MOUNTING BRACKETS ON THE LATCH BUSHINGS. CHECKING THAT THE RUBBERS ARE SEATED ON THE LATCH BUSHINGS AND TIGHTEN THE 1/2"-13 HEX BOLTS TO 65 FOOT POUNDS.
6. HOLD THE GUARD UP TO THE FRAME AND INSTALL THE 1"-8 X 3-1/4" BOLTS (ITEM #7), THROUGH THE OUTSIDE OF THE BRACKET AND THROUGH THE FRAME. INTALL THE 1" LOCK WASHERS (ITEM #18) AND 1" HEX NUTS (ITEM #11), AS SHOWN IN *fig. 1*. TIGHTEN THE BOLT TO 587 FOOT POUNDS.

28OCT15 REV F  
06SEP13 REV E  
05FEB13 REV D  
29AUG11 REV C  
24MAR11 REV B  
28JAN11 REV A  
04MAY09 REV -



(A LIVERNE Company)

1200 E. Birch St.

Brandon, SD 57005

## MACK PINNACLE AXLE FORWARD/BACK (2007-CURRENT)

### SERVICE PARTS LIST

ITEM	PART NO.	QTY	DESCRIPTION
1	205504	1	GUARD – TUBULAR, 3” SST
	205505		GUARD – TUBULAR, 3” BLACK
2	206794	1	MOUNTING BRACKET – LH, ZP
3	206795	1	MOUNTING BRACKET – RH, ZP
4	205694	2	MOUNTING BRACKET LATCH - ZP
5	108972	2	LATCH BUSHING - ZP
6	205793	2	MOUNTING BRACKET STOP
7	108590	2	SCREW – HEX HEAD, 1”-8 X 3-1/4”, ZP
8	108968	2	BOLT - SHOULDER, 5/8” X 7/8”
9	109472	2	SCREW – HEX HEAD, 1/2”-13 X 3”, ZP
10	108971	2	SCREW – HEX HEAD, 5/16”-18 X 1-1/4”, SST
11	108591	2	NUT- HEX, 1”, ZP
12	100081	2	WASHER-FLAT, 7/16”, ZP
13	105654	4	NUT – NYLOCK, 1/2”-13, ZP
14	102380	2	NUT – NYLOCK, 5/16”-18, ZP
15	108969	10	WASHER – BELLEVILLE, .630 X 1.25 X .040 X .082
16	100034	2	WASHER – FLAT, 5/16”, ZP
17	102149	2	WASHER – 1” OD X 5/8” ID X 1/16”, HDPE
18	100158	2	WASHER – LOCK, 1”, ZP
19	102500	4	TUBE INSERT – 3”
20	100252	1	SERIAL NUMBER DECAL

SERVICE PARTS DRAWING

MODEL NO. - 205780

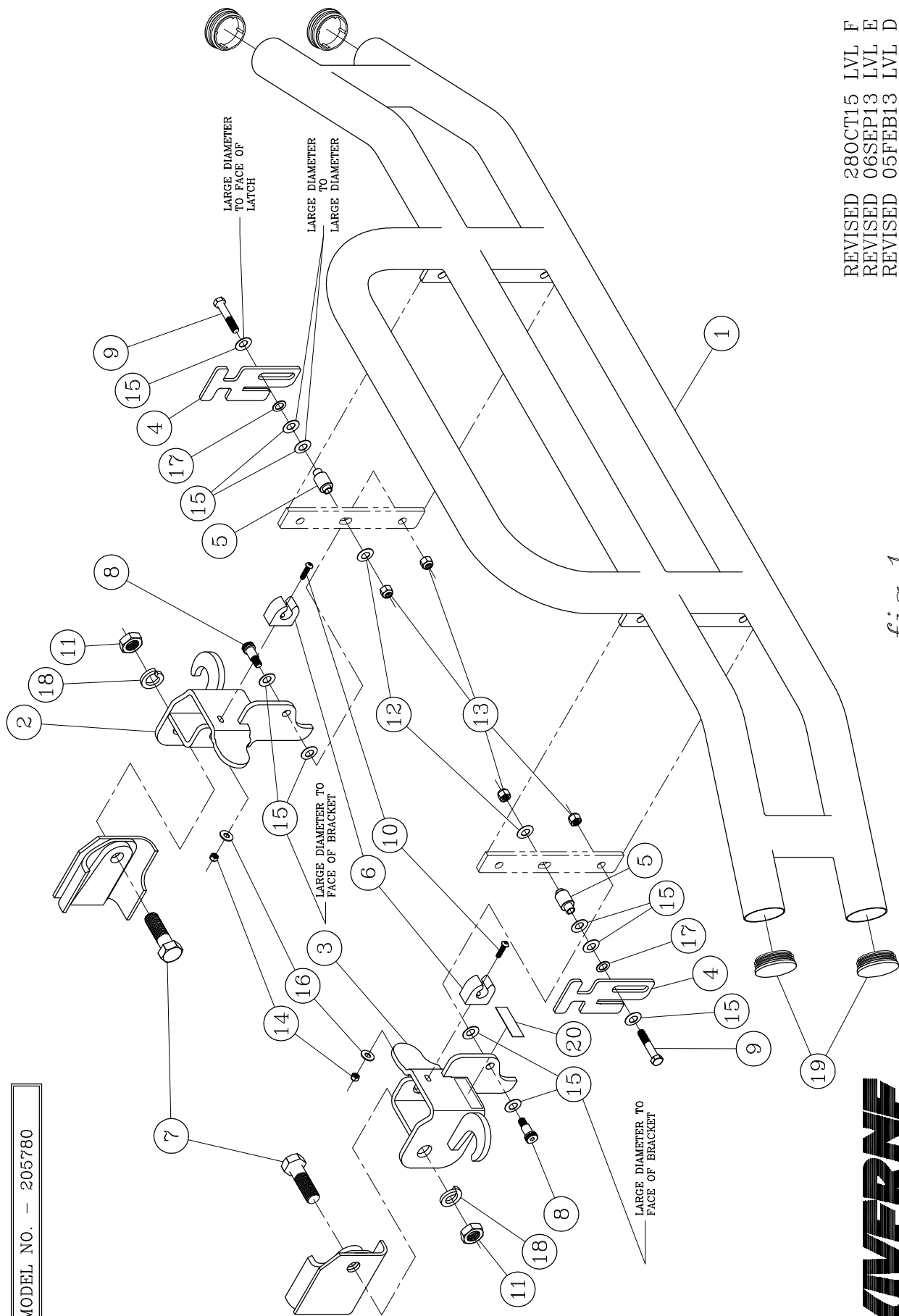


fig. 1

REVISED 28OCT15 LVL F  
REVISED 06SEP13 LVL E  
REVISED 05FEB13 LVL D  
REVISED 29AUG11 LVL C  
REVISED 24MAR11 LVL B  
REVISED 28JAN11 LVL A

205782 SHEET 3 OF 3 04MAY09



12800 E. Birch St.  
Bremerton, WA 98312