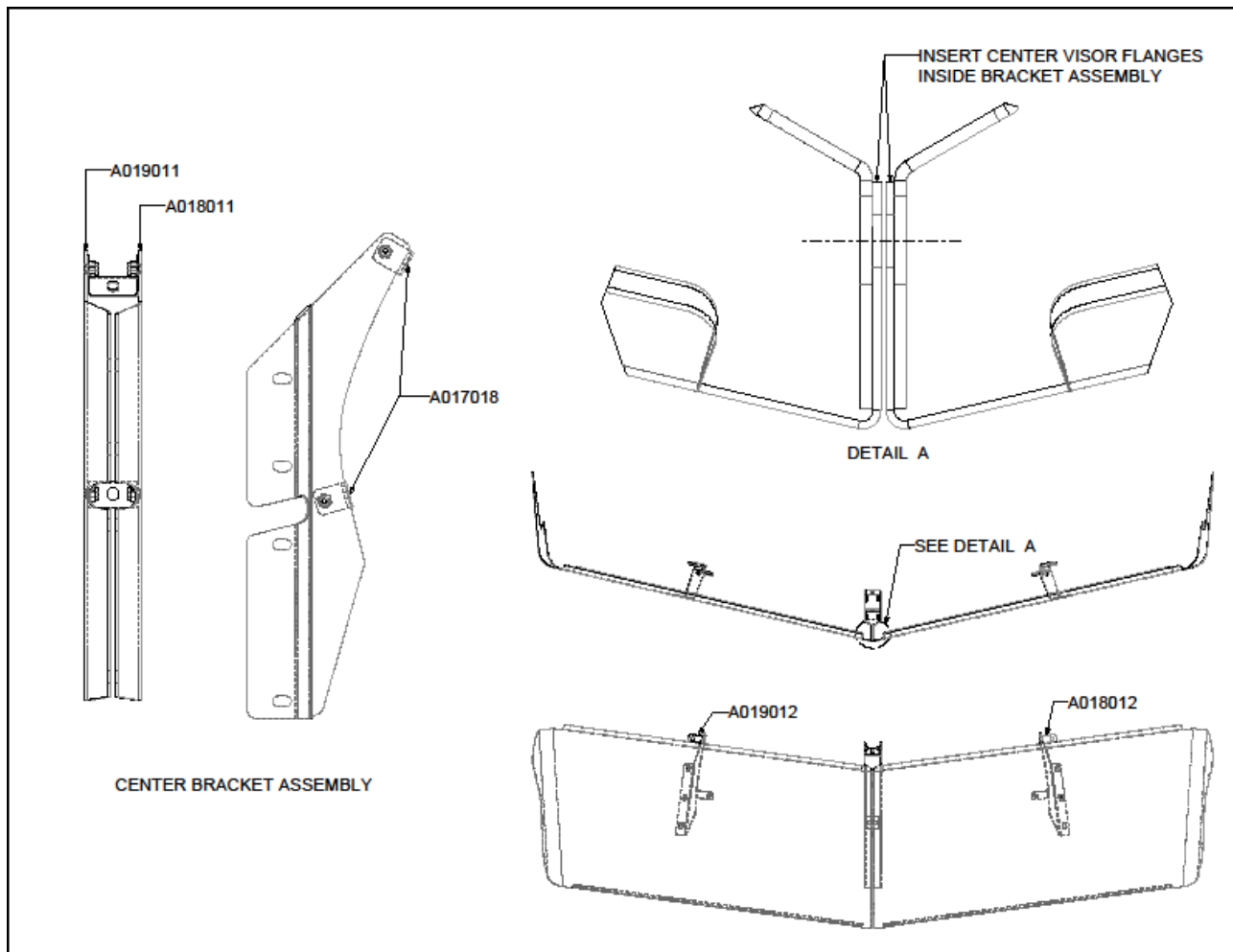




PB FACTORY FIBERGLASS REPLACEMENT SUNVISOR

Phoenix Design & Manufacturing 6215 Aluma Valley Drive Oklahoma City, OK 73121 Toll Free 888-789-2550

- 1) Remove OEM sun visor and retain all hardware for later use.
- 2) Assemble brackets (A017018, A018011 & A019011) using #10-24 x 1/2" Slotted Machine Screw, then attach to roof cap using bolts and washers retained from step 1. It is recommended that all the bolts be started and bracket assembly be mounted to roof cap before securely tightening.
- 3) Bolt brackets A018012 (left side) and A019012 (right side) to visor using the supplied #10-24 truss head machine screws, washers and lock nuts. It is recommended that all the bolts attaching brackets to visor be started before tightening any of them.
- 4) Attach the "ear" of each visor half to the side of the cab using the 4 bolts and washers retained from step 1. **Be sure center flanges of visor are inside center bracket assembly prior to tightening visor "ears" to side of cab. (See detail A)**
- 5) Bolt left side bracket (A018012) and right side bracket (A019012) to roof cap using bolts retained from step 1. It is recommended that all the bolts attaching brackets to roof be started before tightening any of them.
- 6) Join left and right side visor together in the center bracket assembly using supplied hardware.
- 7) Align as needed, and then securely tighten all hardware.



CAUTION: Sheet metal parts may have sharp edges

P521048 Rev A