

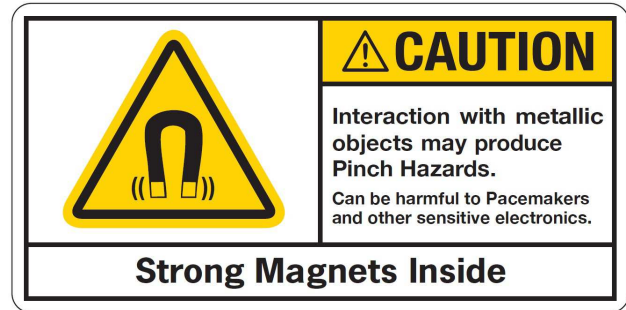


(A LUVERNE Company)

1200 E. Birch St.

Brandon, SD 57005

MACK PINNACLE AXLE FORWARD/BACK (2007-CURRENT)



INSTALLATION INSTRUCTIONS

READ THE INSTRUCTIONS COMPLETELY AND CHECK TO MAKE SURE THAT ALL OF THE REQUIRED PARTS ARE ON HAND BEFORE STARTING THE INSTALLATION.

1. LOOSEN AND REMOVE THE TOW HOOKS FROM EACH SIDE OF THE FRAME RAIL BY REMOVING THE COTTER KEY AND 1" PIN.
2. USING THE 5/8" X 7/8" SHOULDER BOLTS (ITEM #8), .630 X 1.25 X .040 X .082 BELLEVILLE WASHERS (ITEM #15) AND 1/2"-13 NYLOCK NUTS (ITEM #13), ATTACH THE MOUNTING BRACKETS (ITEM #2 & #3) TO THE OUTSIDE OF THE GUARD USING THE BOTTOM HOLES. TIGHTEN TO 65 FOOT POUNDS.
3. USING THE 5/8"-11 X 1-3/4" BOLTS (ITEM #17), AND 5/8"-11 NYLOCK NUTS (ITEM #14), AND 5/8" FLAT WASHER (ITEM #16), ATTACH MAGNET & MAGNET BRACKET (ITEM #6 & 9) TO THE MOUNTING BARS OF THE GRILLE GUARD, AS SHOWN IN FIG 1.
4. **NOTE: (MAGNETS AND MAGNET BRACKETS ARE PRE ASSEMBLED, SOME ADJUSTMENT MAY BE NECESSARY AFTER THE GRILLE GUARD IS INSTALLED ON THE TRUCK.)**
5. HOLD THE GUARD UP TO THE FRAME AND INSTALL THE 1"-8 X 3-1/4" BOLTS (ITEM #7), THROUGH THE OUTSIDE OF THE BRACKET AND THROUGH THE FRAME. INTALL THE 1" LOCK WASHERS (ITEM #18) AND 1" HEX NUTS (ITEM #12), AS SHOWN IN *fig. 1*. TIGHTEN THE BOLT.



(A LIVERNE Company)

1200 E. Birch St.

Brandon, SD 57005

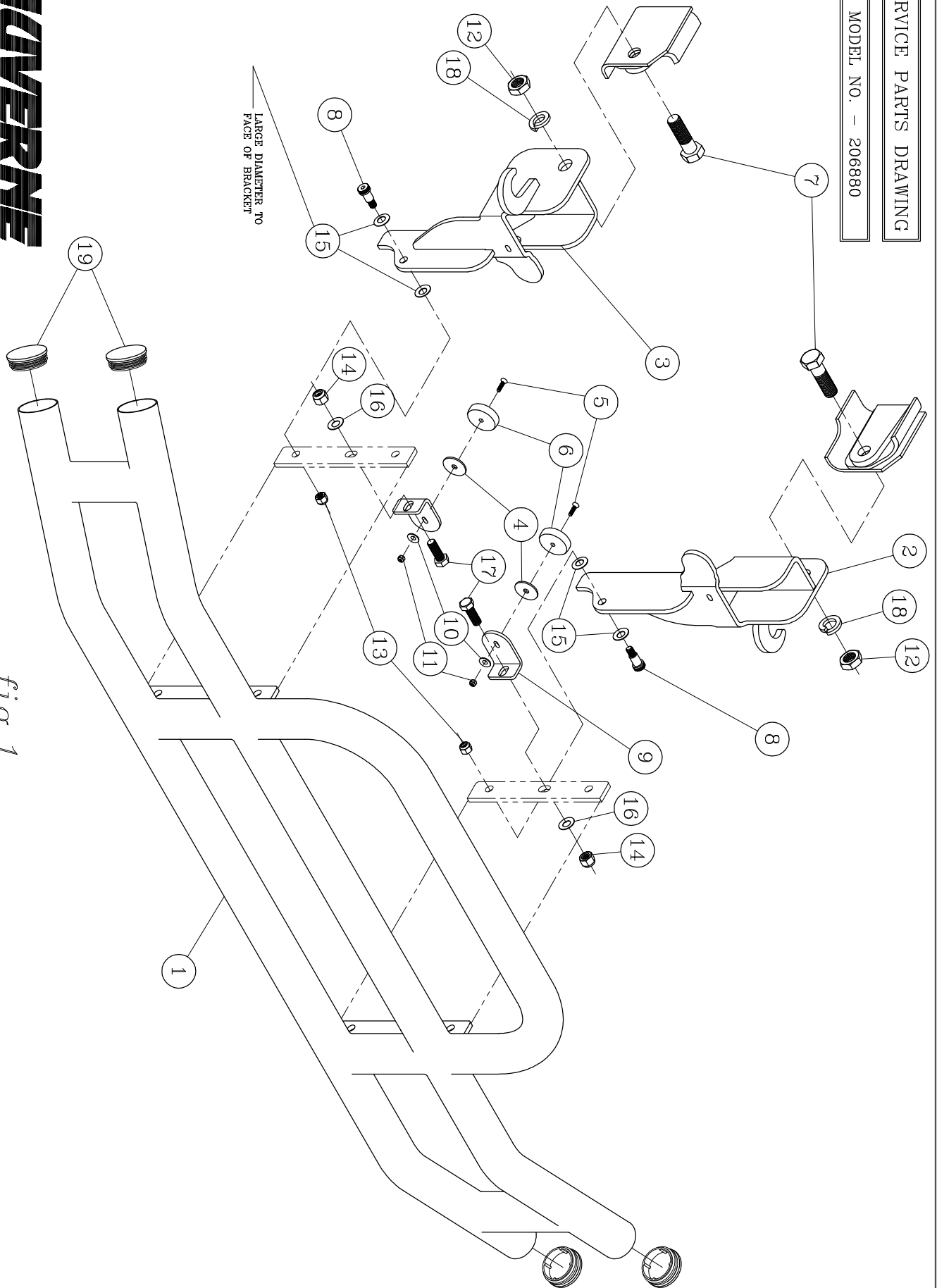
MACK PINNACLE AXLE FORWARD/BACK (2007-CURRENT)

SERVICE PARTS LIST

ITEM	PART NO.	QTY	DESCRIPTION
1	VARIES	1	GUARD – TUBULAR, 3”
2	206888	1	MOUNTING BRACKET – LH, ZP
3	206889	1	MOUNTING BRACKET – RH, ZP
4	109932	2	WSHR-RBR, 1.50" OD X .344" ID X .094" THCK
5	109890	2	SCR-FSHCS, 1/4-20 X 1 1/4", ZP
6	109931	2	MAGNET-60MM, 200 LBS. N38, CSK
7	108590	2	SCREW – HEX HEAD, 1”-8 X 3-1/4”, ZP
8	108968	2	BOLT - SHOULDER, 5/8” X 7/8”
9	206519	2	MAGNET BRACKET, ZP
10	100016	2	WASHER-FLAT, 1/4", ZP
11	102375	2	NUT-NYLOCK, 1/4-20, ZP
12	108591	2	NUT- HEX, 1”, ZP
13	105654	4	NUT – NYLOCK, 1/2”-13, ZP
14	107435	2	NUT-NYLOCK, 5/8-11, ZP
15	108969	4	WASHER – BELLEVILLE, .630 X 1.25 X .040 X .082
16	100147	2	FLAT WASHER, 5/8", ZP
17	100175	2	SCREW-HEX HEAD, 5/8"-11 X 1 3/4", ZP
18	100158	2	WASHER – LOCK, 1”, ZP
19	102500	4	TUBE INSERT – 3” (ON CERTAIN MODELS)
20	100252	1	SERIAL NUMBER DECAL

SERVICE PARTS DRAWING

MODEL NO. - 206880



LARGE DIAMETER TO
FACE OF BRACKET

fig. 1

COVERLINE
(A LIVINGSTON Company)
1200 E. Birch St. Breunig, SB 57005