



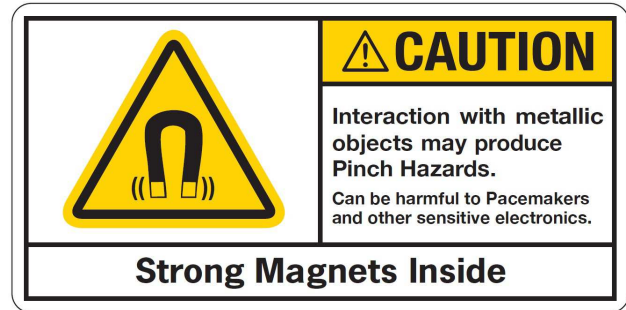
(A LIVERNE Company)

1200 E. Birch St.

Brandon, SD 57005

206620

CLASS 8 VOLVO VN (2004-CURRENT)



INSTALLATION INSTRUCTIONS

READ THE INSTRUCTIONS COMPLETELY AND CHECK TO MAKE SURE THAT ALL OF THE REQUIRED PARTS ARE ON HAND BEFORE STARTING THE INSTALLATION.

1. INSERT THE BRACKET MOUNTING BARS (ITEM #4), INTO THE TOW HOOK RECEIVERS ON THE TRUCK. YOU MUST USE THE VEHICLE SUPPLIED 3/4" DIA. PINS (OR EQUIVALENT) TO SECURE THE BRACKET MOUNTING BARS IN THE TOW HOOK RECEIVERS.
2. USING THE 5/8" X 7/8" SHOULDER BOLTS (ITEM #9), .630 X 1.25 X .040 X .082 BELLEVILLE WASHERS (ITEM #14) AND 1/2"-13 NYLOCK NUTS (ITEM #12), ATTACH THE MOUNTING BRACKETS (ITEM #2 & #3) TO THE OUTSIDE OF THE GUARD USING THE BOTTOM HOLES. TIGHTEN TO 65 FOOT POUNDS.
3. USING THE 5/8"-11 X 1-3/4" BOLTS (ITEM #11), AND 5/8"-11 NYLOCK NUTS (ITEM #12), AND 5/8" FLAT WASHER (ITEM #10), ATTACH MAGNET & MAGNET BRACKET (ITEM #6 & 7) TO THE MOUNTING BARS OF THE GRILLE GUARD, AS SHOWN IN FIG 1.
4. **NOTE: (MAGNETS AND MAGNET BRACKETS ARE PRE ASSEMBLED, SOME ADJUSTMENT MAY BE NECESSARY AFTER THE GRILLE GUARD IS INSTALLED ON THE TRUCK.)**
5. INSTALL THE GRILLE GUARD ASSEMBLY WITH BRACKETS ATTACHED, ONTO THE BRACKET MOUNTING BARS.
6. INSTALL THE 7/8"-9 X 3" BOLTS (ITEM #8) AND THE 7/8" LOCK WASHERS (ITEM #17) THROUGH THE FACE OF THE BRACKETS AND INTO THE MOUNTING BRACKET BARS (ITEM #4). TIGHTEN THE BOLTS. **(NOTE: WHEN TIGHTENING THE BOLTS, THE BRACKETS WILL HAVE A TENDENCY TO ROTATE. TO KEEP THE BRACKET FROM ROTATING, INSERT A BAR IN THE TOW HOOK AND UNDER (RH) OR OVER (LH) THE SQUARE TUBE TO MAINTAIN A STRAIGHT UP AND DOWN POSITION.)**

NOTE: AFTER THE FIRST 1000 MILES, CHECK THE 7/8"-9 HEX MOUNTING BOLTS FOR LOOSENESS AND RETORQUE IF NECESSARY.



(A LIVERNE Company)

1200 E. Birch St.

Brandon, SD 57005

SERVICE PARTS LIST

ITEM	PART NO.	QTY	DESCRIPTION
1	VARIES	1	GUARD – TUBULAR, 3”
2	206630	1	MOUNTING BRACKET – LH, ZP
3	206631	1	MOUNTING BRACKET – RH, ZP
4	205652	2	BRACKET MOUNTING BAR - ZP
5	109890	2	SCR-FSHCS, 1/4-20 X 1 1/4", ZP
6	109931	2	MAGNET-60MM, 200 LBS. N38, CSK
7	206519	2	MAGNET BRACKET, ZP
8	107873	2	SCREW – HEX HEAD, 7/8”-9 X 3”, ZP
9	108968	2	BOLT - SHOULDER, 5/8” X 7/8”
10	100147	2	FLAT WASHER, 5/8", ZP
11	100175	2	SCREW-HEX HEAD, 5/8"-11 X 1 3/4", ZP
12	105654	2	NUT – NYLOCK, 1/2”-13, ZP
13	107435	2	NUT-NYLOCK, 5/8-11, ZP
14	108969	4	WASHER – BELLEVILLE, .630 X 1.25 X .040 X .082
15	100016	2	WASHER-FLAT, 1/4", ZP
16	102375	2	NUT-NYLOCK, 1/4-20, ZP
17	107874	2	WASHER – LOCK, 7/8”, ZP
18	102500	4	TUBE INSERT – 3” (ON CERTAIN MODELS)
19	100252	1	SERIAL NUMBER DECAL
20	109932	2	WSHR-RBR, 1.50" OD X .344" ID X .094" THCK

SERVICE PARTS DRAWING

MODEL NO. - 206620

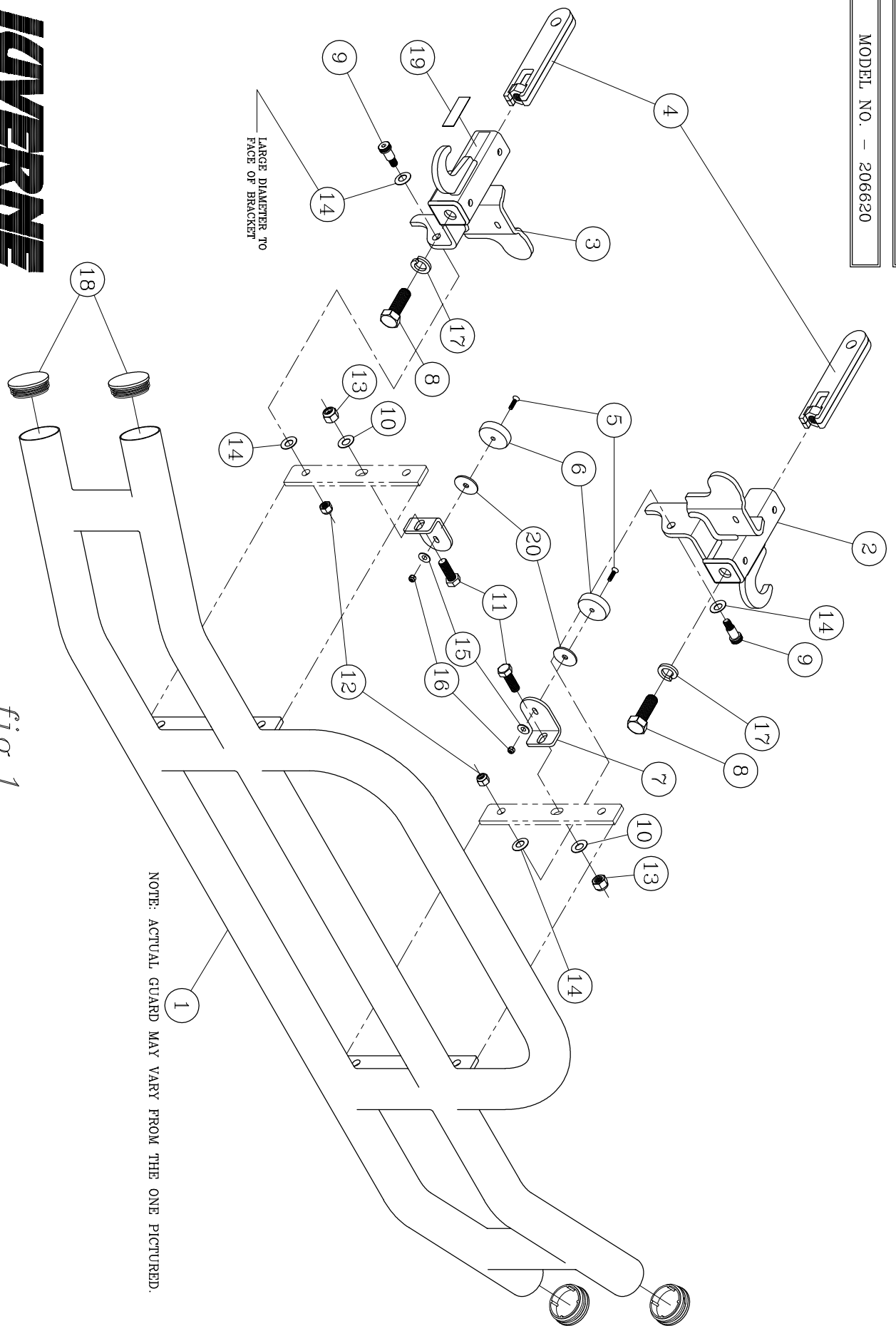


fig. 1



1200 E. Birch St. Portland, OR 97205