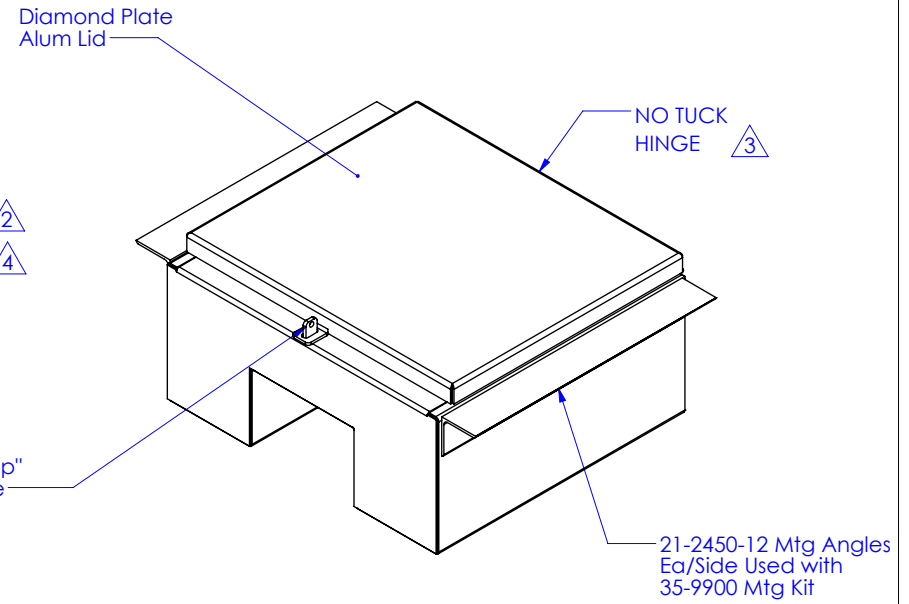


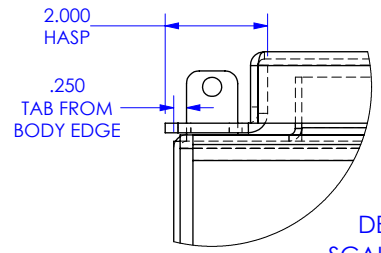
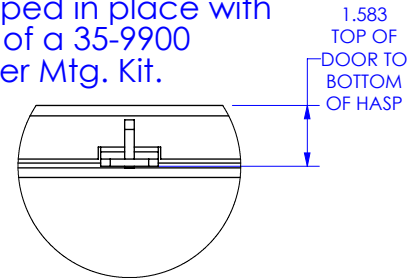
ITEM NO.	PART NUMBER	DESCRIPTION	QTY.
1	21-2650-04	BODY AL. NOTCHED IN-FRAME BOX 12 IN HI UNIT	1
2	21-2650-06	END AL. NOTCHED IN-FRAME BOX 12 IN HI UNIT	2
3	21-2647-09	LID,AL,IN-FRAME BOX,DIA. PLT.	1
4	21-2450-12	ANGLE REAR CORNER-3X3X.1875X21.125	2
5	21-2647-10	TAB, ALUM LOCK LOOP (1/4X1X1.25)	1
6	21-2647-11	HASP, FIXED, AL, LOCK LOOP (3/16) 1.313HX2DX1.5L	1
7	90-370319	VALVE, RBR VAC DONALDSON P525956-1/8	2
8	90-470024	HINGE 2.5 STAINLESS X 23 LNG ONE LEG	1

SHIP 2 (TWO) RUBBER VAC VALVE (90-370319) LOOSE INSIDE BOX.

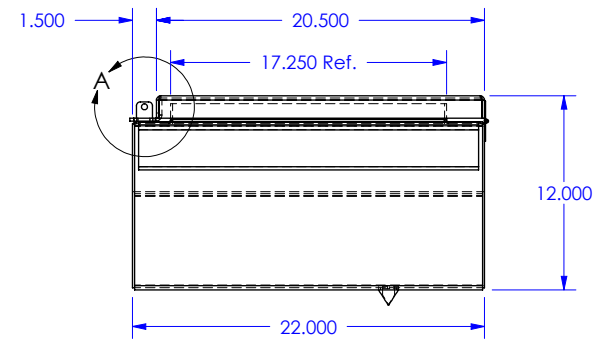
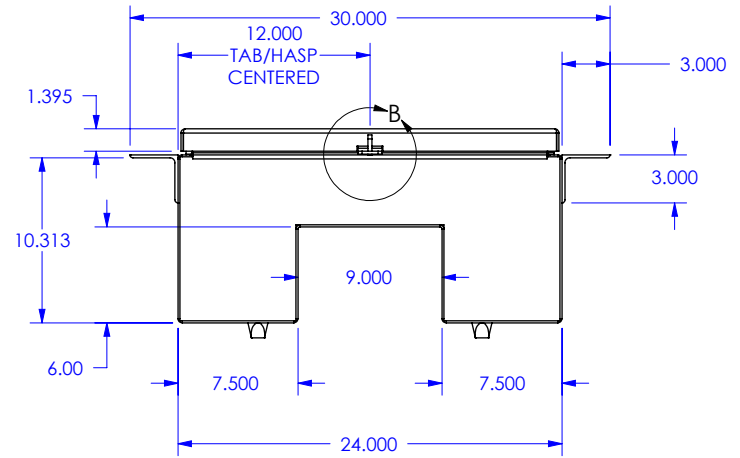
This Box mounts between the truck chassis frame rail flanges with box supported by mounting angles and clamped in place with formed brackets of a 35-9900 Frame Deck Cover Mtg. Kit.



DETAIL B
SCALE 1 : 5



DETAIL A
SCALE 1 : 3.75



4	CHANGED 21-2647-11 FROM ANGLE TO LASER CUT & FORMED 0.190 MF AL.	9/9/2021	1146	AED
3	UPDATED HINGE CALLOUT FROM "TUCKED" TO "NO TUCK"	6/24/2021	1126	TMP
2	UPDAED 21-2647-10 DESCRIPTION	2/12/2021	1019	AED
REV.	DESCRIPTION	DATE	ECN	APPROVED

SEE COMPONENT DRAWINGS

TOLERANCES ±	DRAWN	DATE
UNLESS OTHERWISE SPECIFIED	AED	5/3/2018

DIMENSIONS SHOWN IN INCHES
 X/XX = ± 1/8
 X.XXX = ± 0.125
 ANGULAR = ±1.5°
 REMOVE ALL BURRS
 BREAK ALL SHARP EDGES

THE INFORMATION CONTAINED IN THIS DRAWING IS THE SOLE PROPERTY OF PROTECH INDUSTRIES ANY REPRODUCTION IN PART OR WHOLE WITHOUT THE WRITTEN PERMISSION OF PROTECH INDUSTRIES IS PROHIBITED.

VANCOUVER, WA 98666
 PO BOX 933
 LAVERGNE, TN 37086
 PO BOX 700

DO NOT SCALE DRAWING



DESCRIPTION
**BOX AL. NOTCHED IN-FRAME
 12HX22DX24L, TOP OPEN, NOTCHED**

PART NUMBER
20-2650

PROJ SHEET 1 of 1 REV **4**