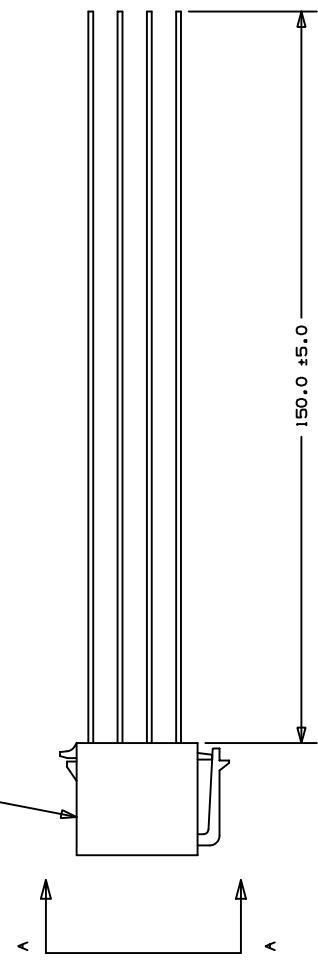
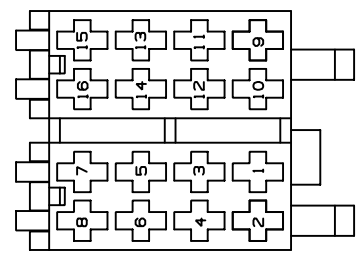


WIRING ASSEMBLY CHART		
CONNECTOR	WIRE COLOR	WIRE GAUGE
1	ORANGE	18
2	DK. BLUE	20
3	RED	18
4	ORANGE/WHITE	18
5	YELLOW	18
6	BLACK	18
7	VIOLET	20
8	DK. GRAY	20
9	GRAY/BLACK	20
10	WHITE	20
11	WHITE/BLACK	20
12	DK. GREEN	20
13	GREEN/BLACK	20
14	BLACK	20
15	BLACK	20
16	BLACK	20

CONNECTOR A: FCI HOUSING 30240101  
OR EQUIVALENT; FCI TERMINAL 60012831  
OR EQUIVALENT



VIEW A-A  
SCALE 2:1

- NOTES:
- 1) USE WIRE TYPE TXL PER SAE J1128
  - 2) ELECTRICAL SPECIFICATIONS (CURRENT RATING):  
CIRCUITS 1, 2, 3, 4, 5, 6, 7, 8, 9, 10, 11, 12, 13, 14, 15, 16 ARE 10 AMPS MAX  
OTHER CIRCUITS, 8 AMPS MAX
  - 3) APPLY PART NUMBER AND REVISION LEVEL ON BLACK WIRE
  - 4) REFERENCE 09379436

REV	DATE	DESCRIPTION	BY	CHKD	APP'D	PERMITS	REVISION
1	3-16-04	NEW RELEASE	GG	O-401	HS	HS	N/A
2	3-16-04	NEW RELEASE	GG	O-401	HS	HS	HARNES ASSY, 14 COND
3	3-16-04	NEW RELEASE	GG	O-401	HS	HS	B
4	3-16-04	NEW RELEASE	GG	O-401	HS	HS	PP201746

UNLESS SPECIFIED DIM TOLERANCES ARE  
 ONE PLACE (.X) ±0.08  
 TWO PLACE (.XX) ±0.03  
 THREE PLACE (.XXX) ±0.010  
 DIMENSIONS ARE IN INCHES UNLESS OTHERWISE SPECIFIED.